

## INSIDE THIS ISSUE

- 2010-11 ... THE YEAR AT A GLANCE
- MLPA SOUTH COAST CIRCUS CONTINUES

## CWPA NEWS:

- 2010-11 FINANCIAL REPORT
- 2010-11 DIRECTORS

## A CLOSER LOOK:

MARKET SQUID - AN AMAZING SEASON AND POST-SEASON RESEARCH SURVEY DOCUMENT SQUID ABUNDANCE

## THE LAST WORD

THE NEED FOR UNITY – AND A STRONG ASSOCIATION – HAS NEVER BEEN GREATER.

CWPA PROMOTES THE 'GOOD NEWS' AND PROTECTS ACCESS FOR THE FUTURE OF CA'S WETFISH INDUSTRY.

EDITOR: D.B. PLESCHNER

**In Memoriam**  
**Ciro Ferrigno**

## FY 2010–11 ...THE YEAR AT A GLANCE

In FY 2010-11 your executive director spent 52 days attending meetings on behalf of CWPA: – 24 days in meetings related to federal CPS issues, including attendance at CPS Advisory Subpanel and Stock Assessment Review Panel meetings for sardine and Pacific mackerel, and testimony at the November 2009 meeting of the Pacific Fishery Management Council;

– 13 days in meetings related to state fishery management issues, including Fish and Game Commission meetings, meetings with individual Commissioners, meetings of the MLPA Regional Stakeholders Group, Science Advisory Team and Blue Ribbon Task Force;

– 15 days attending meetings related to CWPA activities, including special sardine research meetings. Meeting venues stretched from San Diego to Spokane WA, and points in-between.

CA participated in industry-sponsored sardine research for the second year, expanding the summer survey into S.CA. and mounting a fall pilot project to evaluate lidar and other methods to improve sardine biomass measurements. In addition, CWPA advanced our collaborative field research program for market squid, conducted an extensive post-season survey of spawning grounds in S.CA. and cemented a cooperative agreement with the Department of Fish and Game as partners in research.

### *Protecting access to fishery resources*

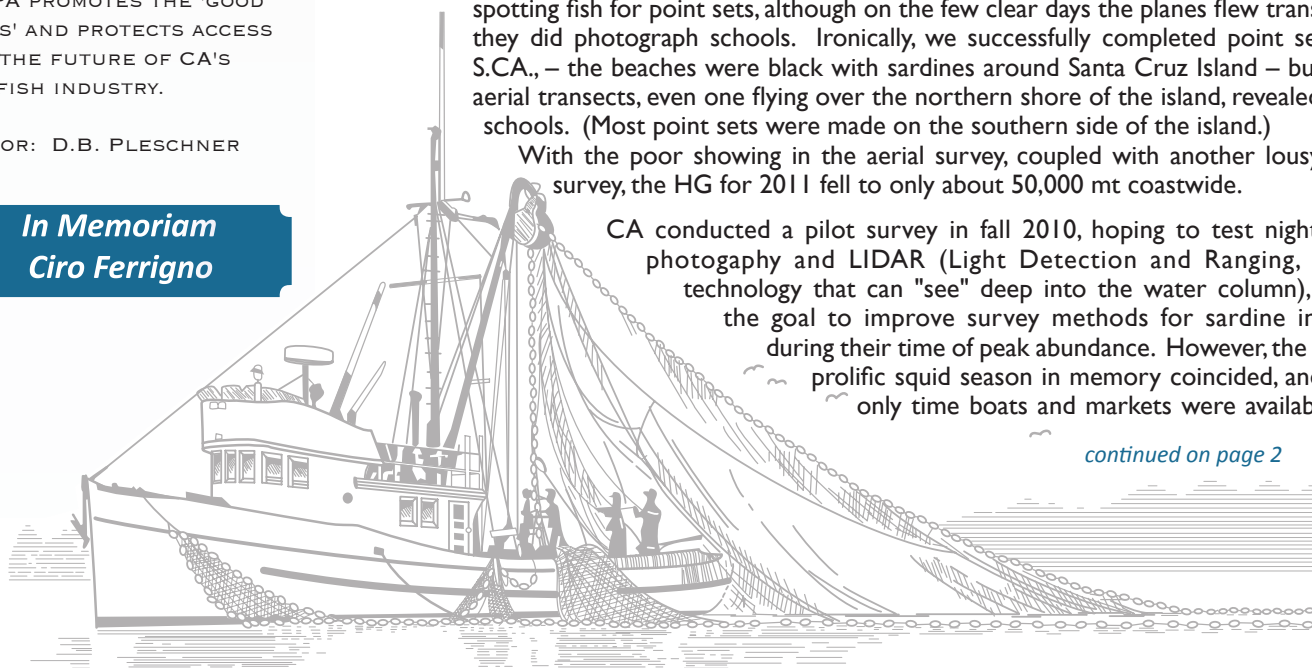
#### **Sardine:**

The sardine harvest guideline approved for 2010 increased to 72,000 mt following inclusion of the 2009 industry-sponsored aerial survey in the stock assessment. Although the increase didn't halt premature closures in every fishing period (and CA again endured complete closure from Oct-Dec, CA's peak season), the positive impact of the aerial survey encouraged both PNW and CA industry to repeat the survey in 2010. In fact, CA extended the survey area into S.CA., responsible for 40 of the 66 transects. Unfortunately, despite our best efforts and long days in the air, PNW and CA pilots were able to document only a tenth of the volume of sardine schools seen the previous year. In CA the summer marine layer in Monterey again prevented pilots from spotting fish for point sets, although on the few clear days the planes flew transects, they did photograph schools. Ironically, we successfully completed point sets in S.CA., – the beaches were black with sardines around Santa Cruz Island – but the aerial transects, even one flying over the northern shore of the island, revealed few schools. (Most point sets were made on the southern side of the island.)

With the poor showing in the aerial survey, coupled with another lousy egg survey, the HG for 2011 fell to only about 50,000 mt coastwide.

CA conducted a pilot survey in fall 2010, hoping to test nighttime photogaphy and LIDAR (Light Detection and Ranging, laser technology that can "see" deep into the water column), with the goal to improve survey methods for sardine in CA during their time of peak abundance. However, the most prolific squid season in memory coincided, and the only time boats and markets were available to

*continued on page 2*



## A CLOSER LOOK...

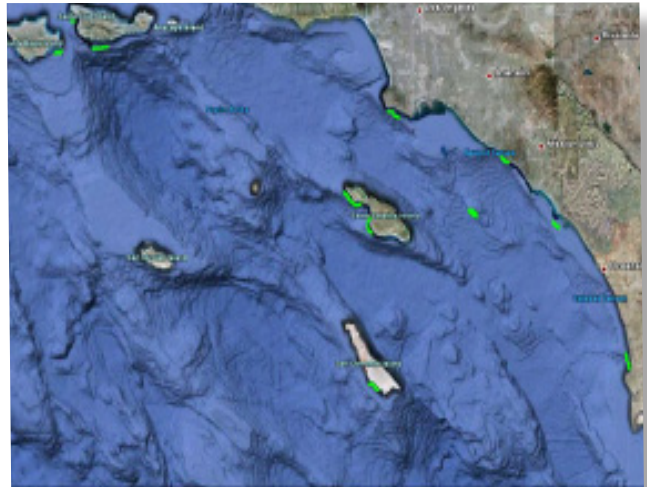
*An amazing squid season closes early, and post-season survey finds lots of squid still spawning in S.CA.*

The stars aligned, and perfect ocean conditions spawned one of the most prolific market squid seasons in recent memory. Squid were sighted from northern CA to the Mexican border and on offshore banks in amazing numbers, and the spawning event continued long after the fishery was closed in mid-December, for the first time since the Market Squid Fishery Management Plan set a harvest cap at 118,000 tons.

Squid returned to Monterey last spring and were still present in winter. Our February 2011 squid bongo net survey still captured squid hatchlings. The Monterey fishery landed more than 20,000 tons, while squid were also spawning in southern CA nearly all year.

CWPA conducted a post-season survey of squid spawning grounds in S.CA. after the close of the fishery. Dr. Doyle Hanan and Tim Athens embarked on a 10-day cruise, towing bongo nets and mapping squid concentrations with acoustics in most of the known spawning areas south of Pt. Conception. That survey documented the super-abundance of squid that remained on the grounds after the fishery was closed.

At the annual meeting, CWPA members voted to expand squid research in 2011. We've chartered the RV Stardust and contracted with a new research assistant, Caitlin Allen, who helped tow bongo nets on CalCOFI cruises and has done squid paralarvae research. Caitlin went out on her first survey for CWPA in May 2011, and succeeded in surveying 15 sites on the southern CA coast and Channel Islands. She is counting paralarvae and entering data, including environmental indices, in our squid database. CWPA also signed a Memorandum of Understanding with DFG, so we're now official research partners.



*The post-season squid survey conducted by Dr. Doyle Hanan and Tim Athens surveyed most spawning grounds in S.CA. The green marks indicate areas mapped with acoustics that commercial quantities of squid. The survey also conducted 31 bongo net tows, establishing a good baseline for future assessments.*

### 2010-11 CONTINUED

#### Sardine (continued)

fish and process sardines was on the weekends. The survey ran into one logistical problem after another, from marine layer grounding the plane, to LIDAR malfunction after an electronic short. As a result, the fishermen ran out of time to accomplish the required number of point sets.

The survey did produce interesting results, demonstrating that the combination of LIDAR and camera is a powerful tool to measure biomass: the camera captures a wider swath of ocean and sees more schools on the surface, while the LIDAR can see far deeper into the water, and can identify schools below the surface to 60-100 feet or more in depth.

In the final analysis, although the project did not capture enough point sets to calibrate the other survey methods, Dr. Jim Churnside from

NOAA's Earth System Research Lab, with whom we contracted for our pilot project, presented his LIDAR data at a sardine research methods workshop held in La Jolla in May 2011. The purpose of the workshop was to develop a coastwide synoptic sardine survey proposal for 2012, comparing the various methods. The objective is to apply for a federal cooperative research grant to coordinate with the SWFSC's planned summer sardine survey, with hopes of calibrating the methods and improving sardine biomass estimates.

We extend grateful thanks to fishermen and markets participating in CA's sardine research in 2010:  
Nick Jurlin and Corbin Hanson- FV Eileen  
Robert Terzoli- FV Maria T  
Neil Guglielmo-FV Trionfo  
State Fish Company  
Tri Marine Fish Company

#### MLPA Initiative – South Coast Circus Continues:

Thanks in large measure to South Coast Regional Stakeholder Group member Ciro Ferrigno, we managed to survive the MLPA Initiative process with critically important spots, like Trancas Cyn. and Catalina Is., still open to the wetfish fleet, as the BRTF's Integrated Preferred Alternative (IPA) acknowledged the importance of the wetfish industry to California.

The MLPA Initiative circus rolled through 2010 on schedule. The Governor made sure of it -- even unceremoniously replacing one Commissioner with another to stack the deck (again) for the final vote. That vote came on December 15. Our main fishing areas were untouched,

*The last word... (bears repeating)*

In unity there is strength – and there has never been a greater need for strength, and a strong association!

It's absolutely clear that fishery management has become ever more restrictive. The Magnuson Reauthorization Act mandate to prevent overfishing required all federal FMPs to set Overfishing Levels and Annual Catch Limits to account for uncertainty, and that translates into additional buffers on harvest guidelines.

ENGOS, and especially Oceana, are now also making a full-court press to protect 'forage' fish. Herring and jacksmelt were included in CPS FMP Amendment 13 as ecosystem component species, along with new Council guidance to 'consider forage needs' when setting harvest guidelines.

Oceana made an end-around existing fishery management with AB 1299, now working its way through the Legislature. Our stiff opposition resulted in amendments that basically gutted the bill, but it's still alive, at least for now – a ticking time bomb.

Another turf war also is brewing with the upcoming reauthorization of the National Marine Sanctuary Act, under the purview of the National Ocean Service. The Republican take-over of the

Congressional House side-tracked the Dems' anti-fishing draft for the time being, but the ENGO initiative to curtail fishing is still alive, too.

CWPA is meeting these challenges with renewed purpose! Thanks for your help! United we stand!!

**BOARD OF DIRECTORS – 2010-11**

President	Vince Torre Tri-Marine Fish Company
Vice President	David Haworth Vent.-Hueneme fisherman
Treasurer- Secretary	Mike Carpenter Sun Coast Calamari
San Pedro (alternate)	Vince Torre Vanessa DeLuca, State Fish Nick Jurlin Richie Ashley
(alternate)	
Ventura-Hueneme (alternate)	Mike Carpenter John Gingerich David Haworth Mike Weynands
(alternate)	
Monterey (alternate)	Sal Tringali, MFC Pete Guglielmo, SCS Frank Tomich David Crabbe Anthony Russo Neil Guglielmo
(alternate)	
Executive Director	Diane Pleschner-Steele

**2010-11  
WHERE THE MONEY WENT  
SUMMARY**

**SPECIES ASSESSED APR 10-MAR '11**

P.MACKEREL	3,227 TONS
J.MACKEREL	417
SARDINE	64,938
SQUID	201,416
ANCHOVY	3,562
OTHER	65
<b>TOTAL (ROUNDED)</b>	<b>271,509 ST</b>

**INCOME (ROUNDED)**

RETAINED 3/31/10	<b>\$148,527.</b>
DEPOSITED 2010-11	
FISHERMEN	295,147.
PROCESSORS	321,401.
SPECIAL SARDINE	196,602.
TOTAL INTEREST	\$419.
TOTAL GRANTS	86,000.
ASSOCIATE MEMBERS	1,000.
EFP SARDINE PROCEEDS	163,897.
<b>TOTAL INCOME</b>	<b>\$1,064,466.</b>

**EXPENSES**

BUSINESS TRAVEL TOTAL	13,689.
AIRFARE	4,092.
AUTO	\$916.
LODGING	4,866.
MEALS +	3,491.
MISC.	325.
CONTRIBUTIONS	1,000.
DONATIONS	10,202.
DBP&A SERVICES	64,800.
DUES & SUBSCRIPTIONS	234.
MEETING EXPENSE	1,832.
OFFICE EXPENSES (TOTAL)	8,106.
OPERATIONS	\$1,335.
SUPPLIES	\$1,959.
POST + PRINT	\$992.
PHONE	\$3,749.
PROFESSIONAL (INS, CPA, GOV, LEGAL, PR)	26,311.
GEN.PI + SQUID RESEARCH	63,197.
SARDINE RESEARCH	
SUMMER	605,618.
FALL (INCOMPLETE)	183,049.
WEBSITE	1,445.
<b>TOTAL EXPENSES</b>	<b>\$992,255.</b>
NET ORDINARY INCOME	72,212.
OTHER INCOME/EXPENSE	4,124.
NET INCOME 3/31/11	76,335.
<b>BALANCE MAR. 31</b>	<b>\$206,112.</b>

**2010-11 CONTINUED**

but MPAs at the southern end of the state grew larger, ostensibly to meet to DFG enforcement's 'feasibility' guidelines. Politics played a large role also.

Following the Commission action, the Partnership for Sustainable Oceans (PSO) filed lawsuit, challenging the legality of the process and alleging collusion. As of this report, implementation is still in limbo (the eye of the hurricane?). There has been no new news lately on either the implementation date or a court hearing date.

We'll continue to keep you posted.

**Promote Sustainable Production & Facilitate Communications**

Two goals of CWPA are to enhance sustainable production and facilitate communications. In 2010-11 CWPA met frequently with state and federal officials, as well as Congressional and Legislative representatives, providing both written and oral testimony regarding issues of importance to the wetfish industry.

One key issue was AB 1299, the new forage bill sponsored by Oceana. We're continuing that battle into FY 2011.

CWPA also updated our website: [www.CaliforniaWetfish.org](http://www.CaliforniaWetfish.org)  
In addition, we contracted with PR consultant Ray Young to help us develop and maintain a public info. blog: [CaliforniaWetfish.org/FishingNews](http://CaliforniaWetfish.org/FishingNews)



## CWPA GOALS

### ***Maintain Access to Resources***

- Track legislation & coordinate response
- Seek grant funding for research
- Communicate with management agencies to develop fishery management plans

### ***Promote Sustainable Production***

- Track issues & coordinate response
- Communicate with authorities re: production issues
- Facilitate resolution
- \*Sponsor research

### ***Facilitate Communication within and outside wetfish industry***

- Serve as liaison between fishermen and processors
- Serve as liaison between industry and management
- \*Produce periodic newsletters to inform industry of news and issues

## CWPA — PURPOSE AND FUTURE

In today's political climate, with Legislative term limits and changes in administration every few years, fisheries need an industry group in place to maintain the fishery profile: the fishery's "institutional" knowledge base and long-term goals. The goal of CWPA is to ensure the wetfish industry puts its best foot forward!

A non-profit organization such as CWPA commands attention despite political or management climate. It facilitates interaction and consensus building between fishery managers and industry, and it facilitates communication with state and federal fishery managers as well as the Legislature and Congress. Maintaining a clear presence in management circles is critically important now, with the state focus on the Marine Life Management Act and Marine Life Protection Act, and federal management guided by precautionary principles in the Magnuson Act. The current push for Sanctuary "management" of marine resources through MPAs adds yet another challenge. Maintaining "eyes on the ground" and a continued presence in management circles is critically important to stay in business.

In this era of precautionary management, it is essential to base management decisions on good science. Without good data, the precautionary principle will be applied and, as a result, fishermen and processors may not have a viable fishery. Field research is expensive, and that's where industry groups such as CWPA can play a critically important role. Research is the key to the future!